

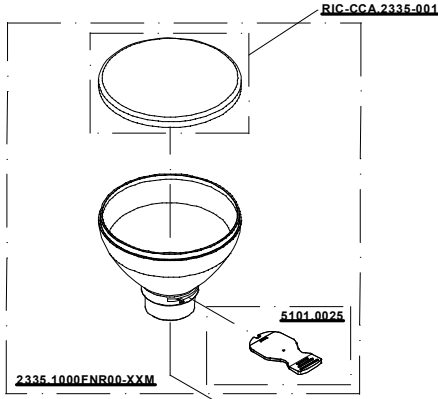
1

2

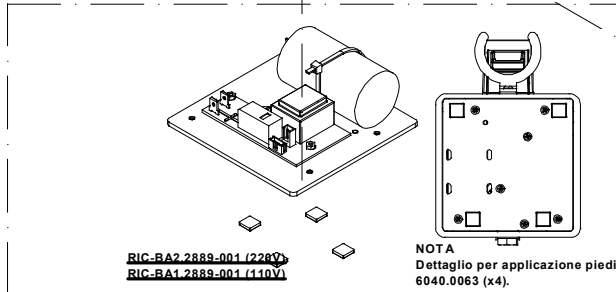
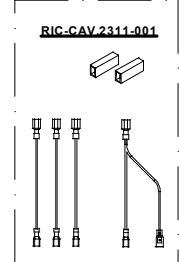
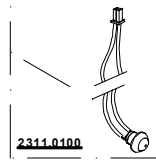
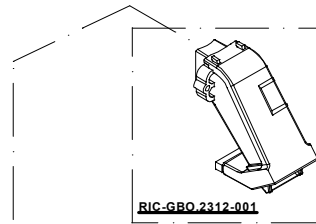
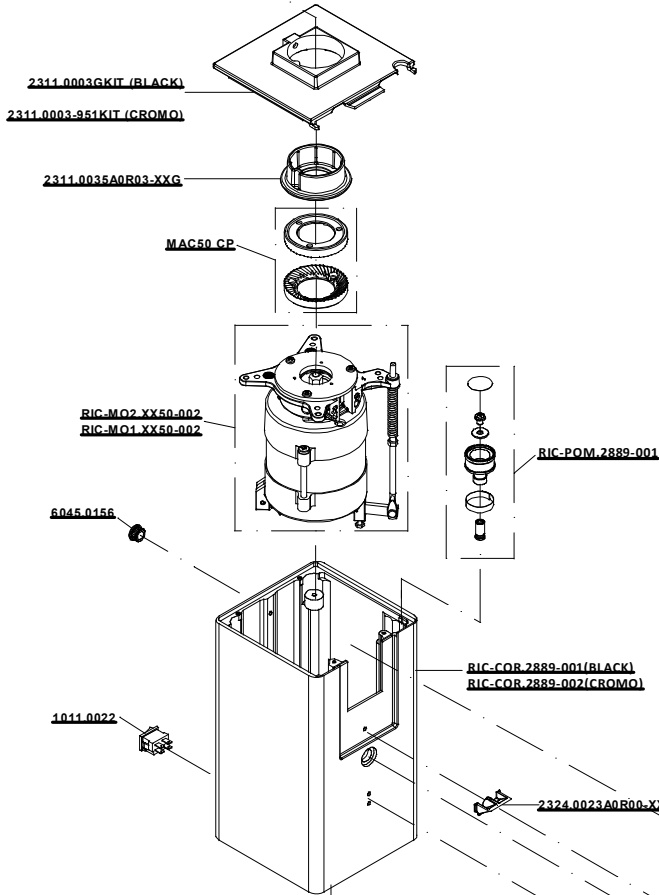
A

B

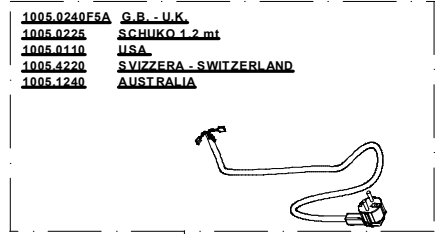
C



ESPLOSO_KUBE MILL_LPV
ESGR-2889-01v2413
 120V/60Hz
 220-240V/50-60Hz



NOTA
 Dettaglio per applicazione piedini
 6040.0063 (x4).



1005.0240F5A G.B. - U.K.
 1005.0225 SCHUKO 1.2 mt
 1005.0110 USA
 1005.4220 SVIZZERA - SWITZERLAND
 1005.1240 AUSTRALIA

N.B. : DOVE INDICATO CON "XXX" SI RICHIEDE DI SPECIFICARE IL COLORE
 PLEASE NOTE - WHERE "XXX" IS INDICATED YOU HAVE TO SPECIFY THE COLOUR

IL PRESENTE DISEGNO E' DI ESCLUSIVA PROPRIETA' DELLA DITTA LA PAVONI, QUALUNQUE CONTRAFFAZIONE O DIVULGAZIONE NON AUTORIZZATA SARA' PERSEGUIBILE A TERMINE DI LEGGE.



Via Privata Gorizia, 7
 20098 S.Giuliano Mil. MILANO

Rev. N° 0

11/04/2024

ESPLOSO NEW KUBE MILL

2880129

1

2

3

A

A

B

B

C

C

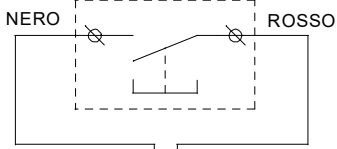
D

D

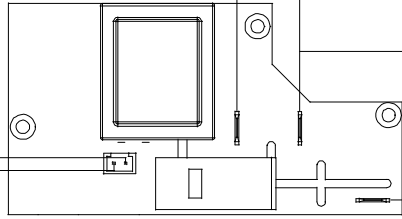
E

E

MICRO ATTIVAZIONE MACINATURA
2311.0100M



SCHEDA ELETTRONICA
PR-NPC-220



VITE SU CORPO



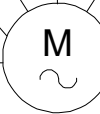
CAV80

MARRONE

NERO

TERRA

TERRA



MOTORE

8000.A20-ALW-R00

CELESTE

ROSSO

CONDENSATORE

1013.0010-WM

LINEA 220-240V 50-60Hz



6040.0033 (x2)

CAV79

CAV80

CAV79

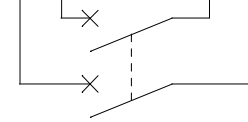
CAV79

1

2

2A

1A



INTERRUTTORE
1011.0022



Via Privata Gorizia, 7
20098 S. Giuliano Mil. MILANO

Rev. N° 0

11/04/2024

SCHEMA EL. 220-240 V KUBE MILL

2870086

1

2

3

1

2

3

A

A

B

B

C

C

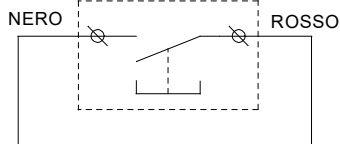
D

D

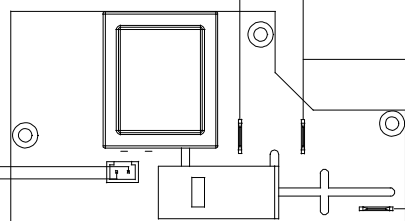
E

E

MICRO ATTIVAZIONE MACINATURA
2311.0100M



SCHEDA ELETTRONICA
PR-NPC-110



VITE SU CORPO



CAV80

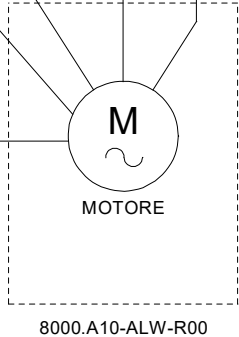
MARRONE

NERO

TERRA

TERRA

TERRA



CELESTE

ROSSO

CONDENSATORE

1013.0020-WM

LINEA 110-120V 60Hz



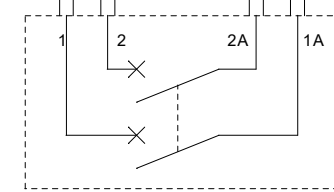
6040.0033 (x2)

CAV79

CAV79

CAV79

CAV80



INTERRUTTORE
1011.0022



Via Privata Gorizia, 7
20098 S.Giuliano Mil. MILANO

Rev. N° 0

11/04/2024

SCHEMA EL. 120 V KUBE MILL

2870087

1

2

3